



## Crosshatch Instructions

Sew in continuous lines not individual boxes. See Figure 1 for what NOT to do. You want to have minimal starts and stops.

1. This method of crosshatches has 3 passes. It applies whether you are doing one or more templates.
2. Beginning with Fig. 2a, you will start in the top right corner and end in the bottom right corner. This is your first pass.
3. In Fig 2b, your second pass will start in the line just below your previous line in step 3. You can either quilt this going up first or down first, it doesn't matter. Your path is going to lead you straight back to this point.
4. In Fig 2c you will start in the third line down (just below the previous line you just did in step 4). This is the third pass. It is almost identical to the second pass in that it doesn't matter if you go up first or down. You will come straight back to this point in the end.
5. Other Crosshatch directions are available at [www.quilt-ez.com](http://www.quilt-ez.com)!

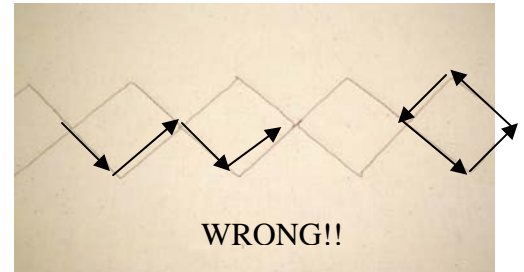


Figure 1

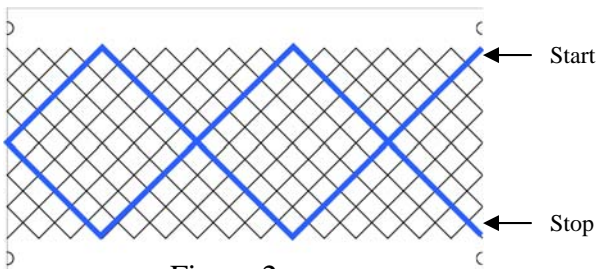


Figure 2a

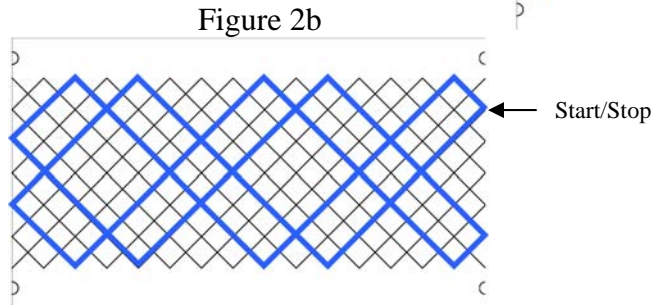


Figure 2b

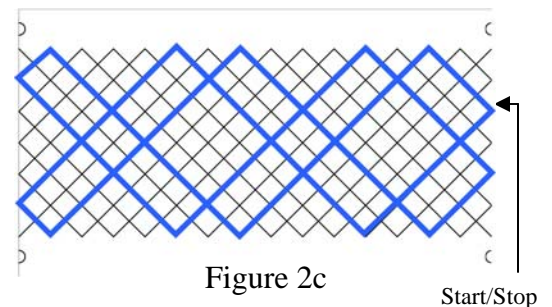
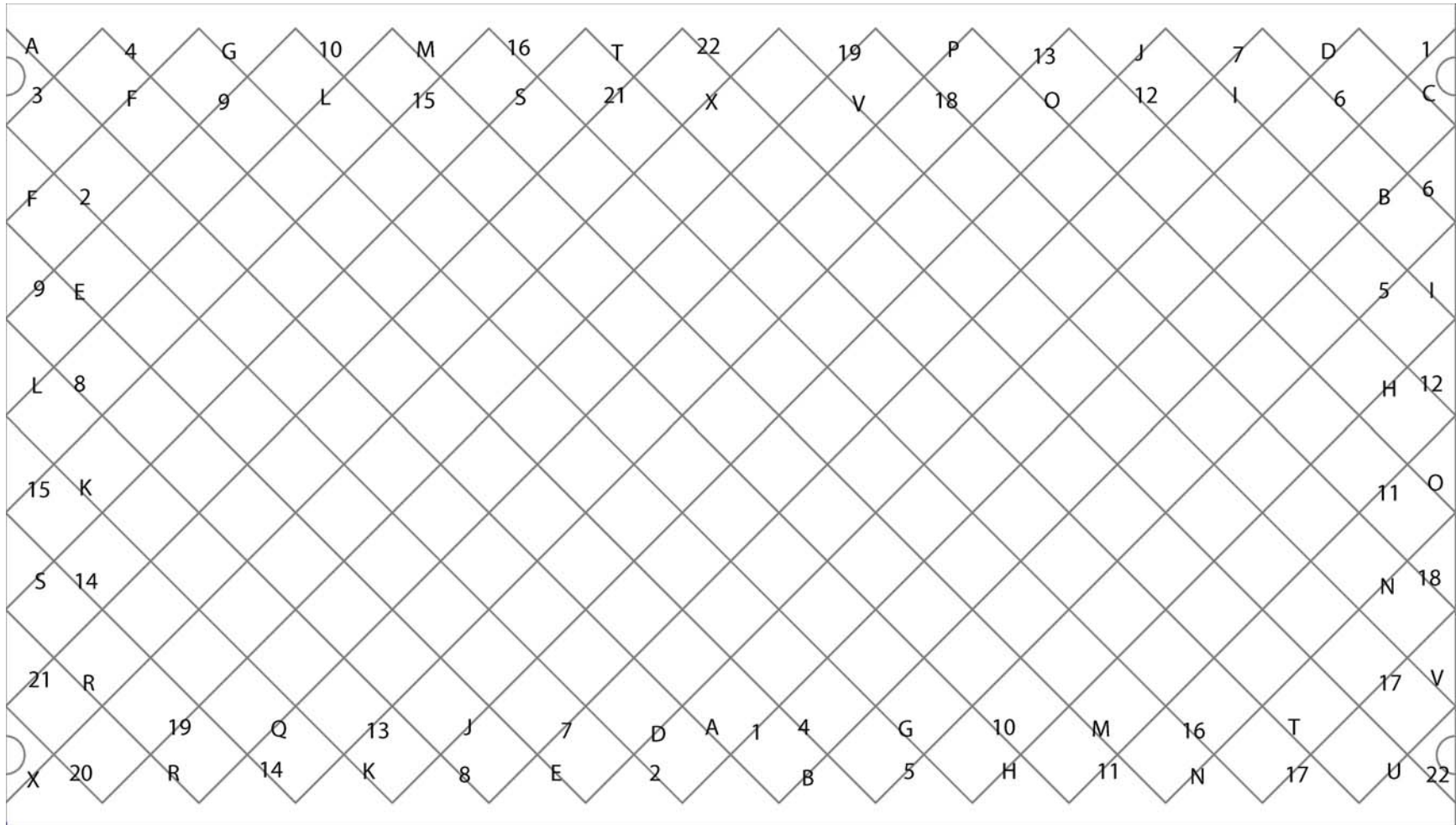


Figure 2c



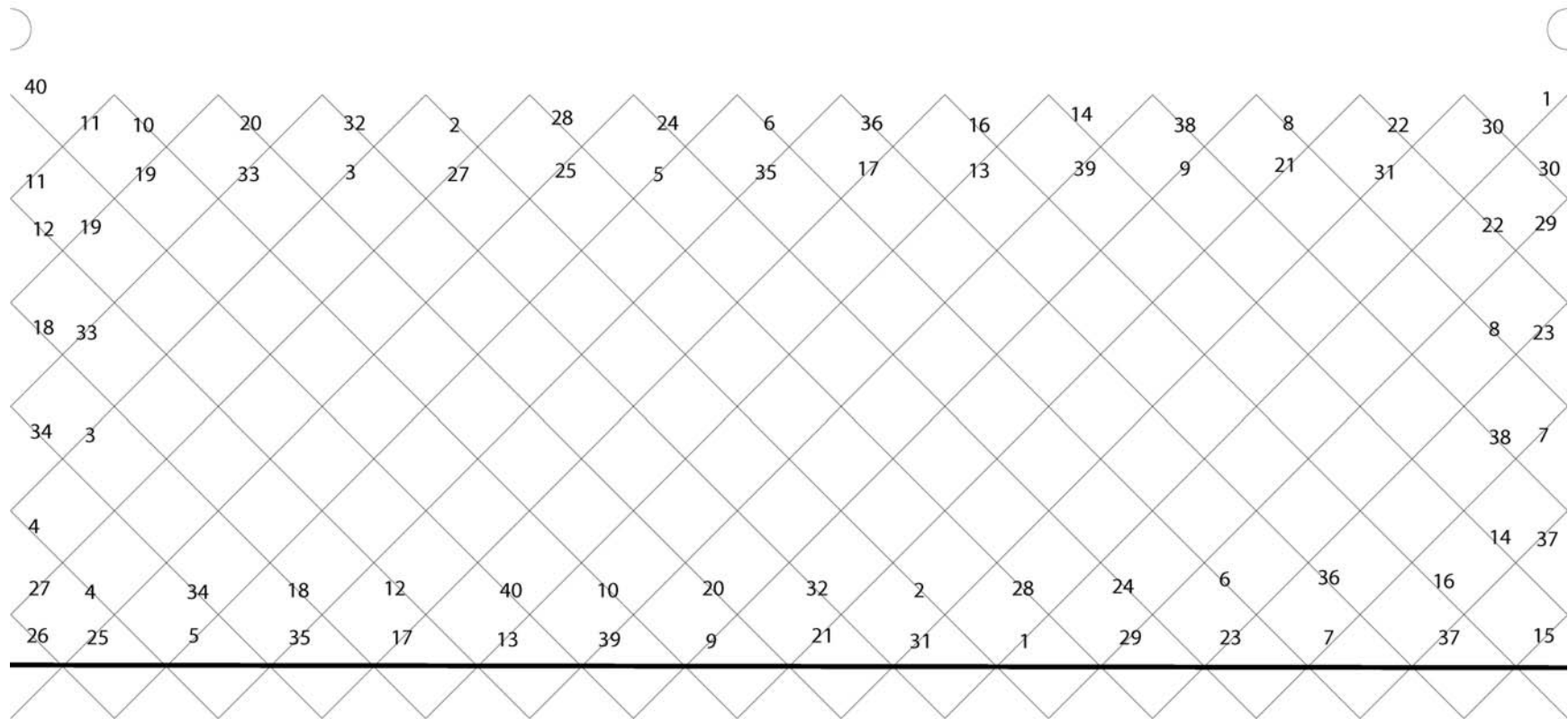
## 13" Crosshatch 2 RUNS



By following these directions, you can complete a whole 13" template in just 2 runs. This method is similar to a dot-to-dot puzzle. Starting with the 1 in the top right hand corner and following the lines until you reach the end of 22 in the bottom right hand corner will finish your first run. The second run starts with 'A' in the top left hand corner and goes all the way through to 'X', which is in the bottom left hand corner. Remember with the Crosshatch that you only want to do one template at a time.



# 10" Crosshatch 1 RUN



This is a simple way to do the whole template without having to stop. The bottom line cutting the bottom squares in half represents a piece of tape. This allows you to have better control while quilting these angles close to the bottom. The numbers are like a dot-to-dot puzzle, starting with 1 in the upper right hand corner and ending with 40 in the upper left hand corner. By doing the template this way, you will be able to go throughout the whole template in one run. Remember when quilting the crosshatch, you want to do one template at a time.

